

Oregon Drought and Water Conditions Report



May 18th, 2026

Conditions at a Glance

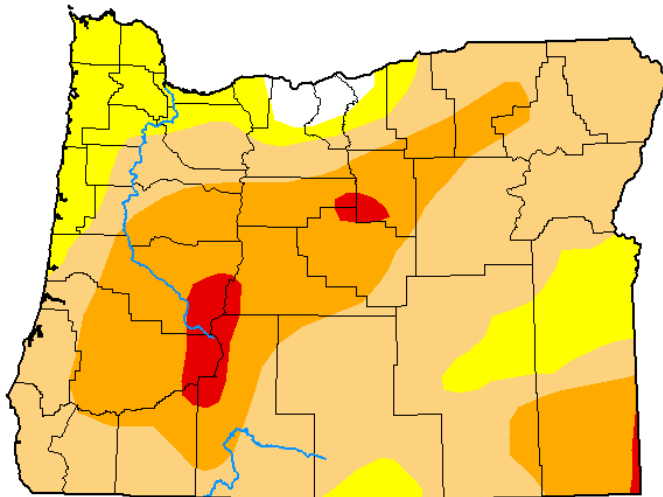
- According to the [U.S. Drought Monitor \(USDM\)](#), as of 5/12, 82% of Oregon is in some form of drought, with 31% of the state in severe to extreme drought.
- Current drought conditions on the USDM are being driven by persistent short- and long-term moisture deficits, below-normal soil moisture and streamflow conditions, above-normal evaporative demand, and well-below-normal snowpack. The introduction of extreme drought in Oregon reflects severe long-term moisture deficits in Oregon.
- [12 counties](#) have already received a state drought declaration under ORS 536, and three additional counties have requested a declaration.

U.S. Drought Monitor Oregon

May 12, 2026

(Released Thursday, May. 14, 2026)

Valid 8 a.m. EDT



Drought Conditions (Percent Area)

	None	D0-D4	D1-D4	D2-D4	D3-D4	D4
Current	1.51	98.49	82.42	31.33	2.93	0.00
Last Week 05-05-2026	3.63	96.37	70.57	20.22	0.20	0.00
3 Months Ago 02-10-2026	32.62	67.38	19.87	4.77	0.00	0.00
Start of Calendar Year 01-06-2026	65.06	34.94	15.76	4.65	0.00	0.00
Start of Water Year 09-30-2025	32.92	67.08	47.65	24.35	1.39	0.00
One Year Ago 05-13-2025	73.04	26.96	0.00	0.00	0.00	0.00

Intensity:

- None
- D0 Abnormally Dry
- D1 Moderate Drought
- D2 Severe Drought
- D3 Extreme Drought
- D4 Exceptional Drought

The Drought Monitor focuses on broad-scale conditions. Local conditions may vary. For more information on the Drought Monitor, go to <https://droughtmonitor.unl.edu/About.aspx>

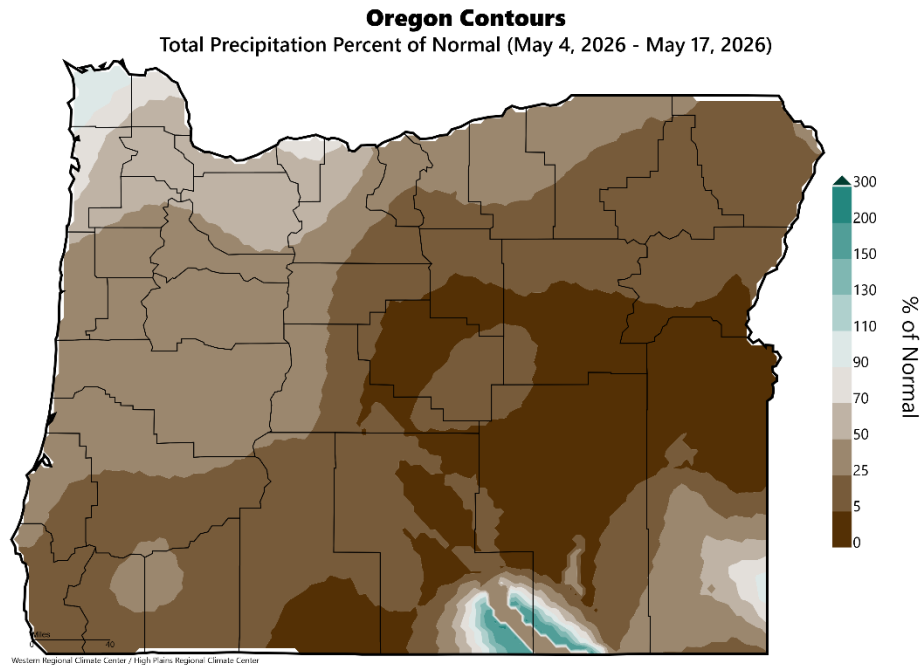
Author:

Rocky Bilotta
NCEI/NOAA

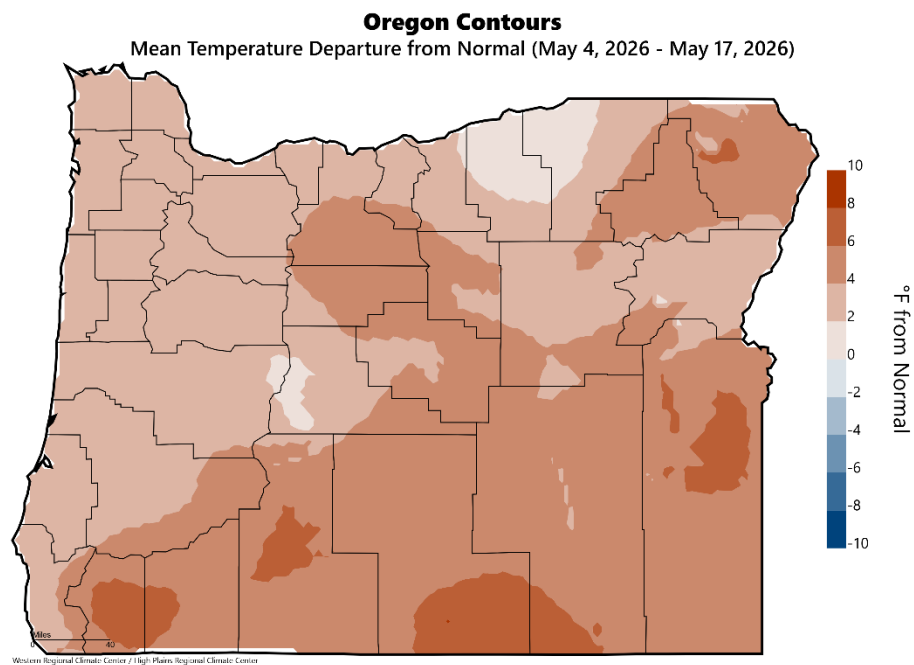


droughtmonitor.unl.edu

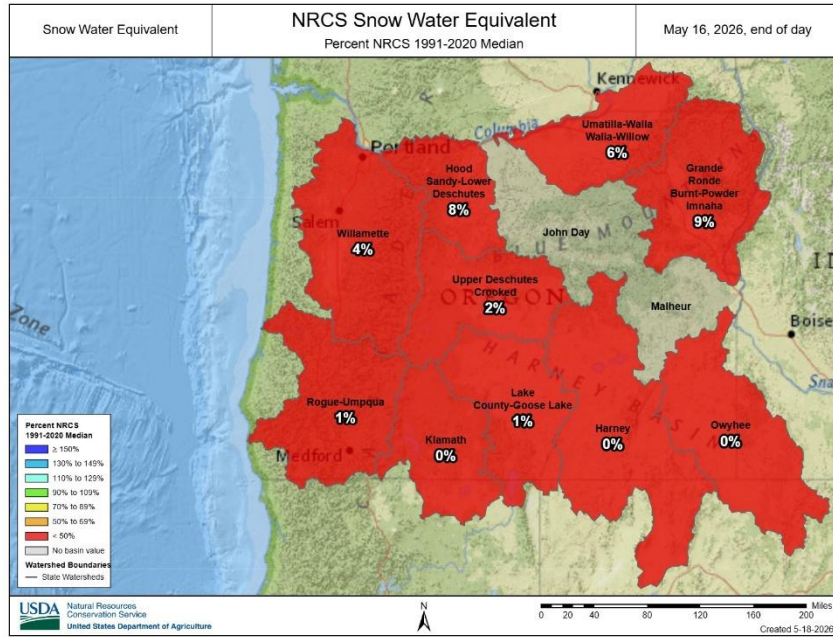
Recent Conditions



- Over the past two weeks, most of the state received below-normal precipitation. The largest deficits were recorded in parts of central and eastern Oregon, where precipitation totals were 1 to 2 inches below normal.

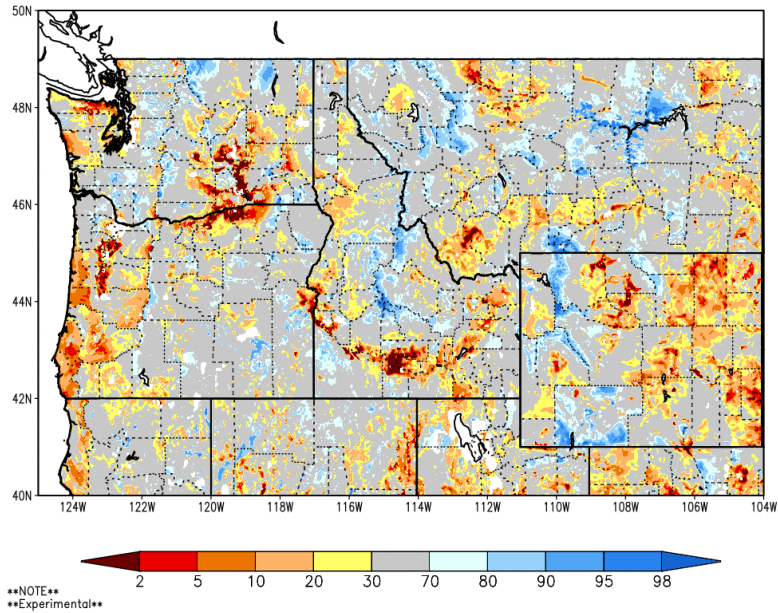


- Temperatures over the past two weeks were above normal statewide.

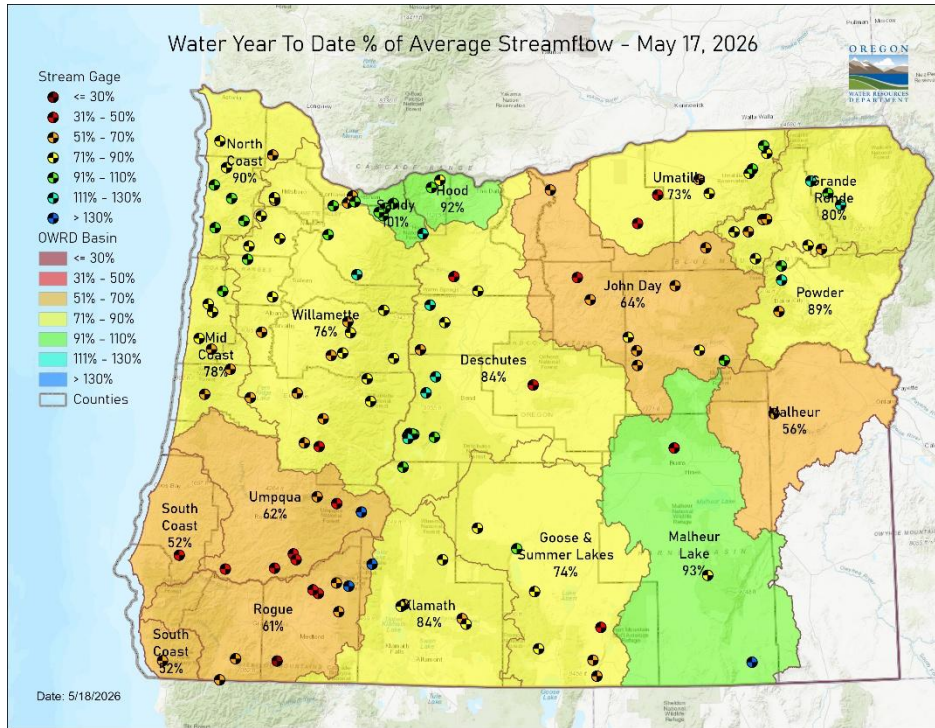


- Snow water equivalent (SWE) in basins across the state is currently measuring well below the historical median (min = 0%; max = 9%). Statewide, SWE is 4% of the historical median.

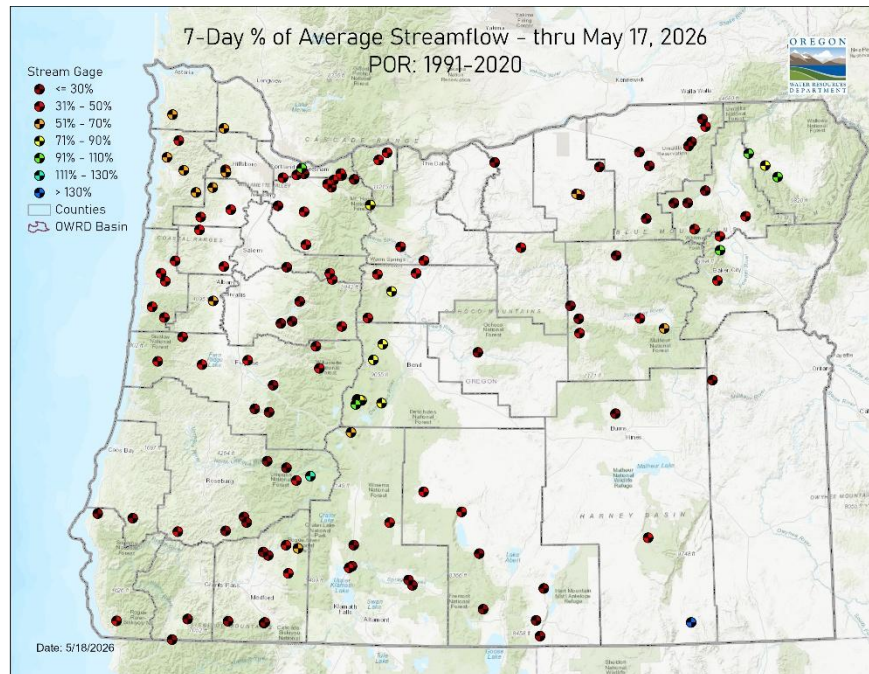
SPoRT-LIS 0-2 m RSM percentile valid 18 May 2026



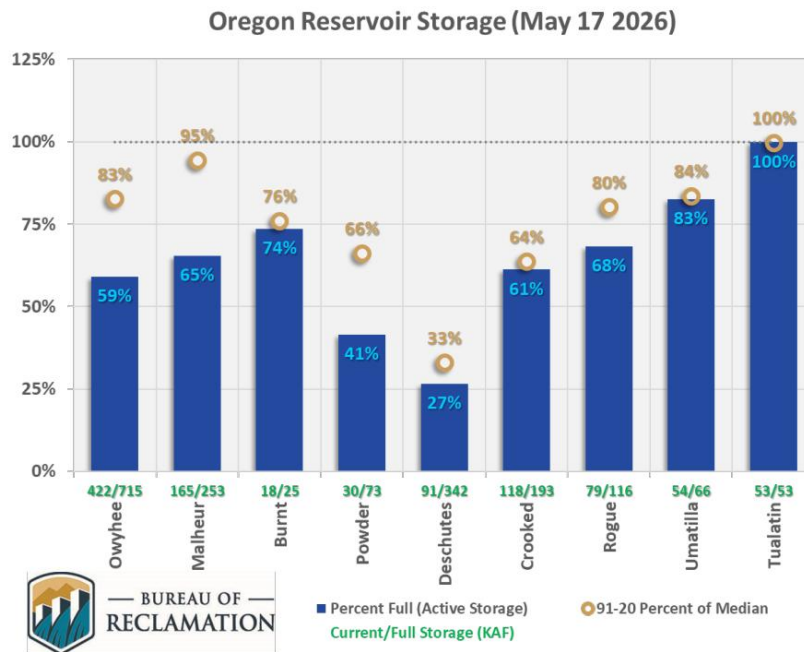
- Recent soil moisture indicators show that conditions are drier than normal across much of western and north-central Oregon.
- Elsewhere in the state, conditions are generally normal, with some isolated pockets of drier-than-normal or wetter-than-normal conditions.



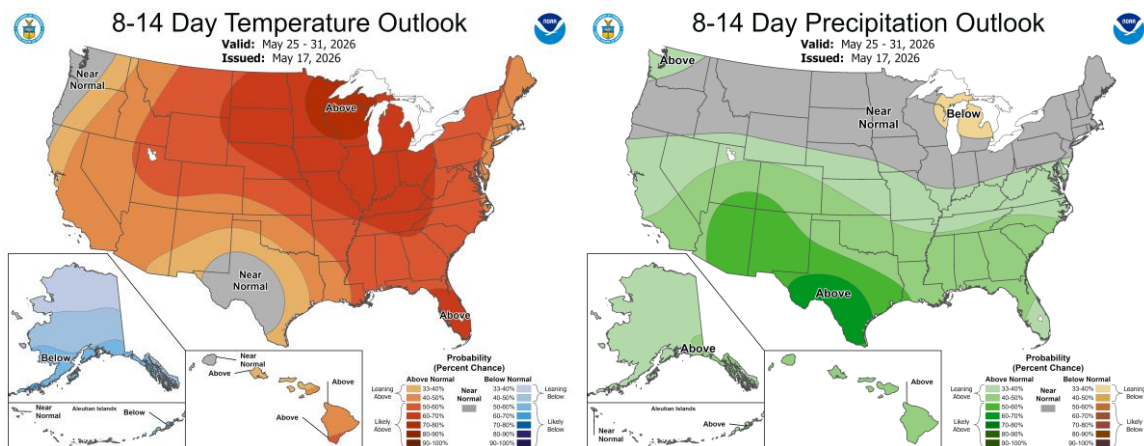
- Water year-to-date streamflow conditions are below normal for most major basins in Oregon. However, in the Sandy, Hood, and Malheur Lake basins, conditions are near normal.



- [Recent streamflow conditions](#) over the last seven days have been below to well below normal for most of the state.



- As of 5/17, most USBR storage projects in Oregon are below normal, excluding projects in the Malheur and Tualatin basins. For more information on reservoir storage projects, refer to the [US Army Corps of Engineers](#) and the [US Bureau of Reclamation](#).



- The [8-14 day outlook](#) indicates probabilities leaning towards above normal temperatures in for central and eastern Oregon with near normal temperatures for western Oregon. The outlook also indicates near normal precipitation for most of Oregon.

Additional Resources and References

Please visit [Oregon Water Resources Department's drought information page](#) to learn about current drought conditions, assistance programs, and potential drought tools.

If you are interested in submitting local drought-related conditions and impacts, please visit the [drought impacts toolkit](#) to learn more. [Click here](#) to visit the map of condition monitoring observer reports.

Released every Thursday, the [US Drought Monitor](#) provides a weekly assessment of drought conditions. The USDM provides a [network infographic](#) which depicts the network of observers who gather and report information about conditions and drought impacts.

The [WestWide Drought Tracker](#) uses data from [PRISM](#) to provide easy access to fine-scale drought monitoring and climate products, such as the figures depicting climate conditions within this report.

The National Weather Service's [Climate Prediction Center](#) offers [weekly](#), [monthly](#), and [seasonal](#) climate outlooks illustrating the probabilities of temperatures and precipitation.

The [Regional Climate Centers](#) (RCC) working with NOAA partners, deliver climate services at national, regional, and state levels. Climate [anomaly maps of Oregon](#) are updated daily at around noon PST.

NASA's [Gravity Recovery and Climate Experiment](#) (GRACE) provide satellite-based observations of soil moisture conditions that are useful as drought indicators, helpful in describing current wet or dry soil conditions.

USGS [Water Watch](#) provides maps of real-time and average streamflow conditions at USGS sites throughout the state.

Reservoir storage “teacup” diagrams are offered by both the [US Bureau of Reclamation](#) and [US Army Corps of Engineers](#). The diagrams represent the level of fill in the reservoirs as both percent full and as a ratio of volume of water currently in the reservoir to the volume of water in the reservoir when it is full.

Oregon wildfire information can be found through [InciWeb](#) and the Oregon Department of Forestry's [Wildfire News](#), along with the [Northwest Interagency Coordination Center](#) which offers outlooks on the significant wildland fire potential.

Oregon Office of Emergency Management maintains a [hydrology/meteorology dashboard](#) which shows state and local drought declarations, as well as hosts many of the data

sources to generate this report. Use the selection arrows at the bottom of your browser to navigate through the various sources.

US Department of Agriculture provides the [Weekly Weather and Crop Bulletin](#) as a vital source of information on US and global weather, climate, and agricultural developments, along with seasonally appropriate agrometeorological charts and tables. USDA's [Drought Programs and Assistance](#) offers links to programs and resources to help those struggling with persistent drought.